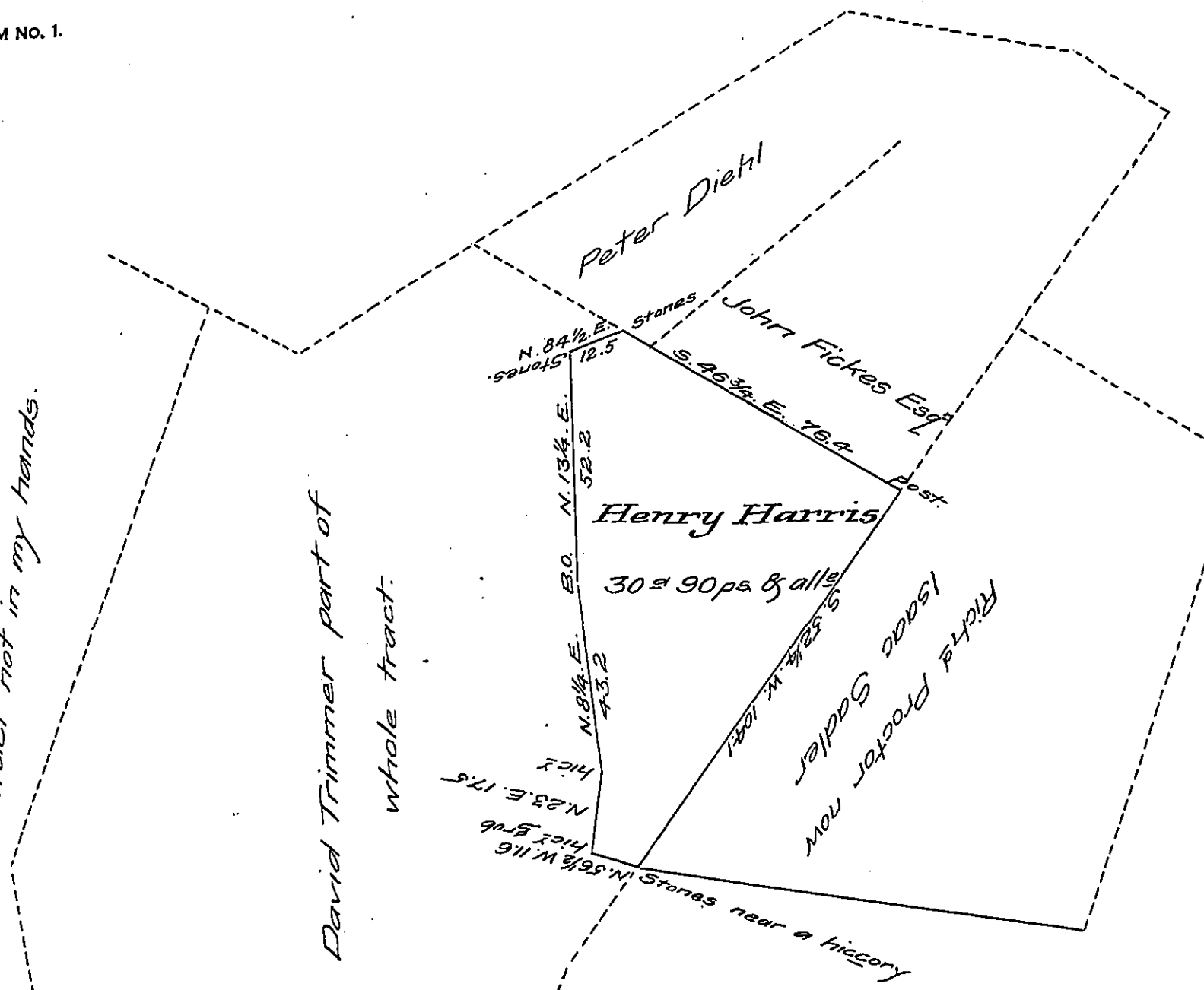


Wm Thompson part of whole tract the draft of which or of whole tract not in my hands.

David Trimmer part of whole tract.



Situate in Huntingdon
 Township Adams County Being
 part of a tract said to contain
 333 1/4 a Surveyed April 1st 1761 by
 George Stevenson D.S. by Warrant to
 Henry Harris dated Dated March 18th 1746/7 divid-
 ed from the residue August 26th 1811 for Isaac Sadler
 Containing thirty acres ninety perches & all ce.

By Saml Sloan D.S.

To Richd T. Leech Esq.
Surveyor General.

IN TESTIMONY that the above is a copy of the original remaining on file in
 the Department of Internal Affairs of Pennsylvania, made
 conformably to an Act of Assembly approved the 16th day of
 February 1833, I have hereunto set my hand and caused
 the Seal of said Department to be affixed at Harrisburg,
 this thirteenth day of January 1908.

Henry Hoover
 Secretary of Internal Affairs.